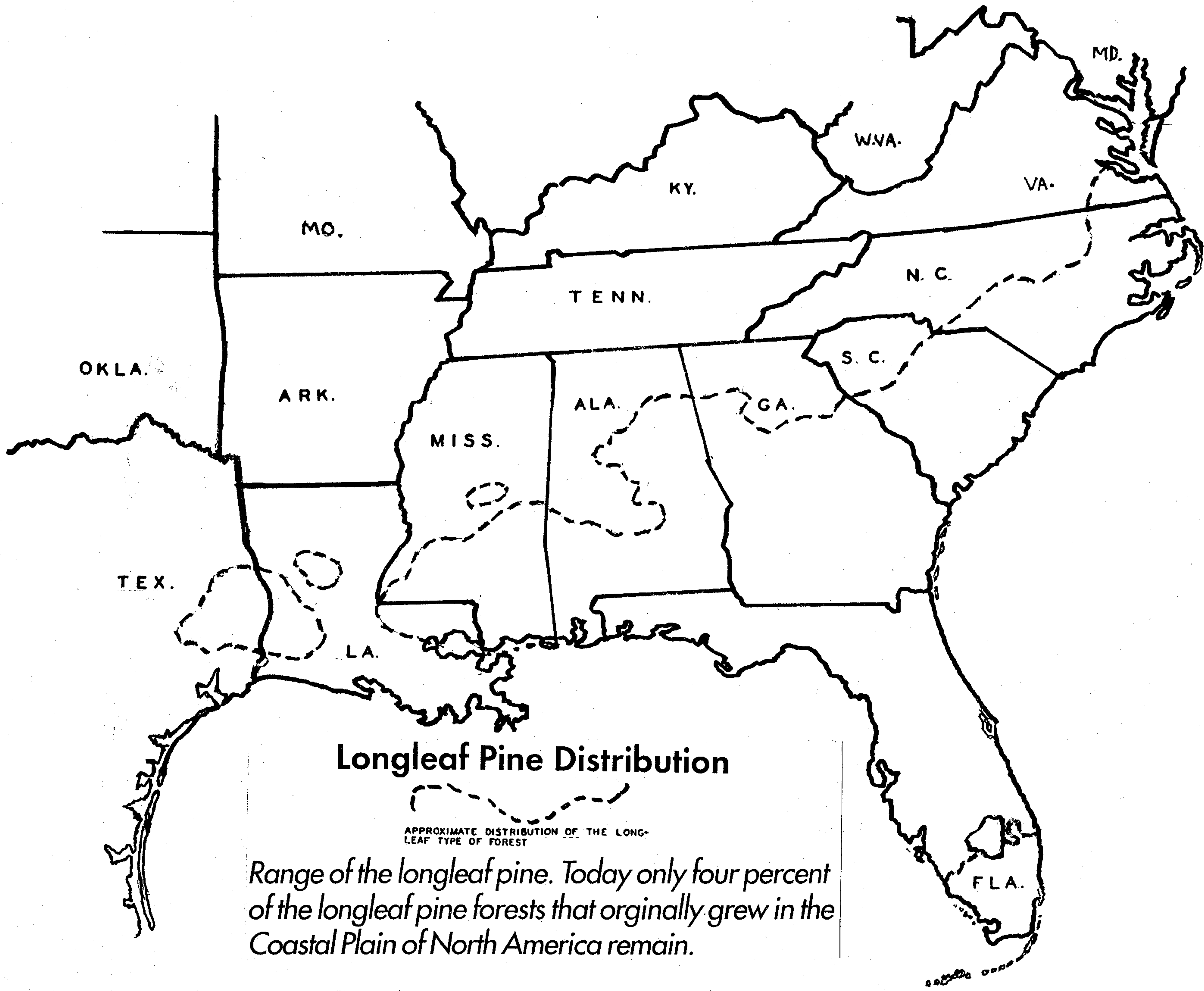


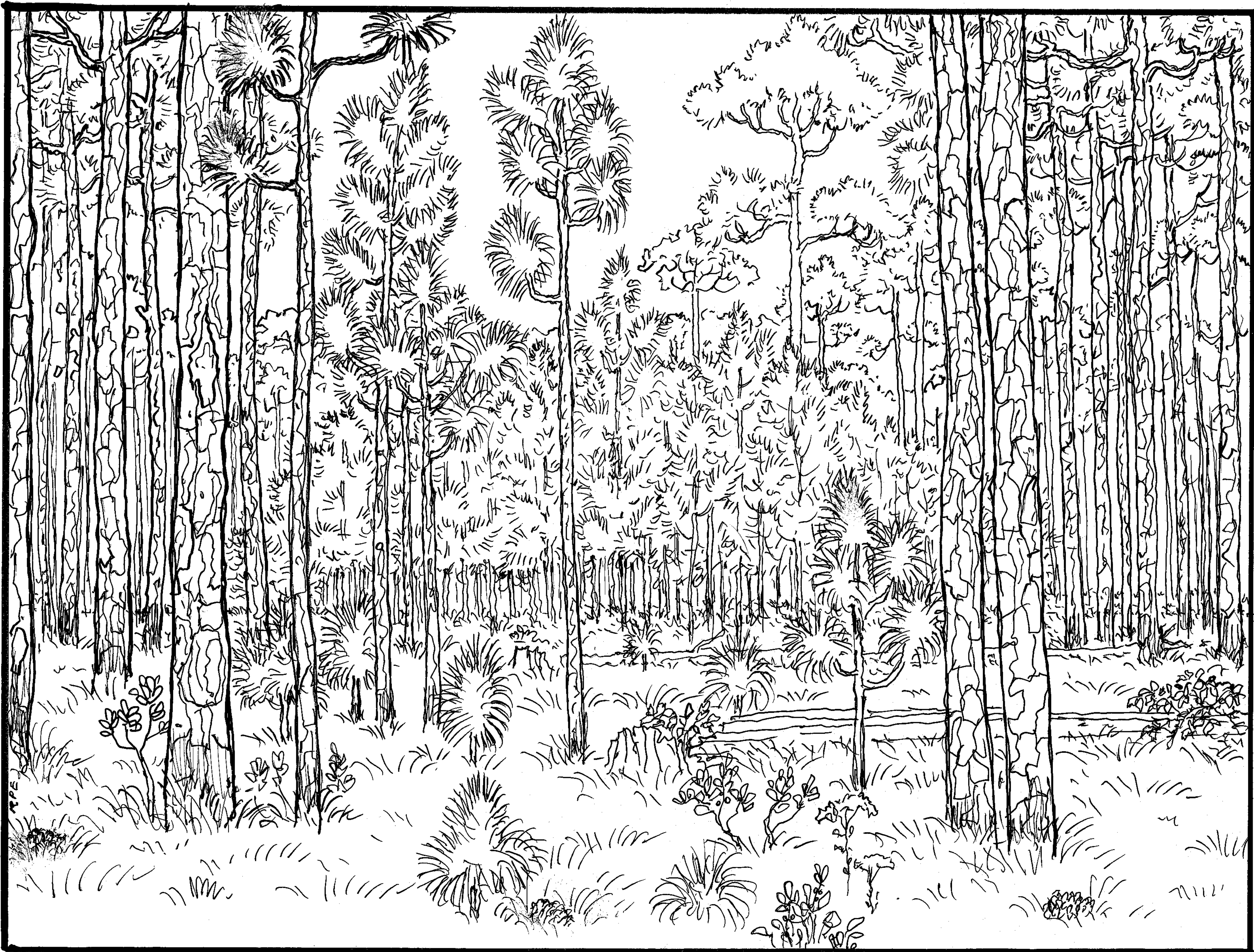
SPEN

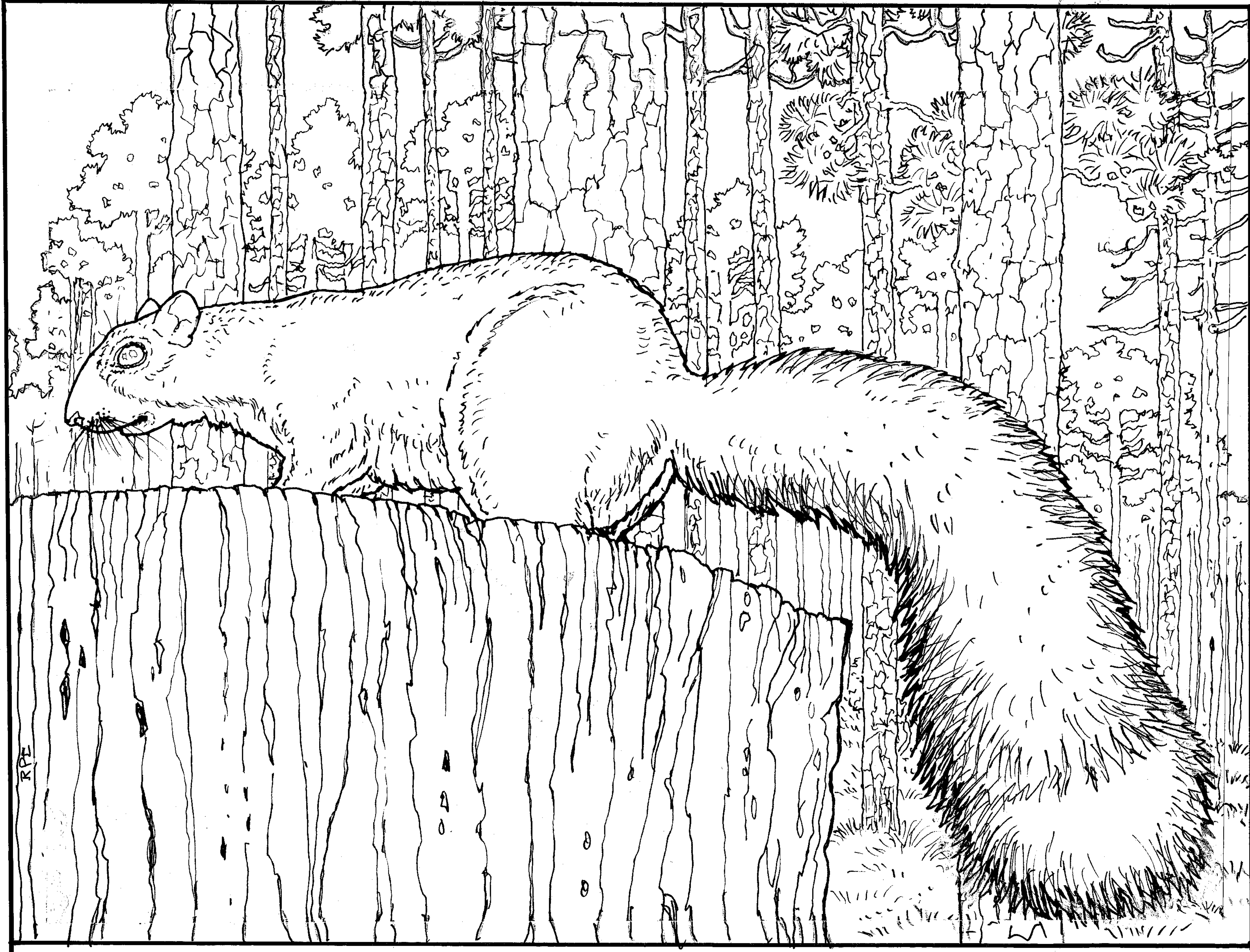


Longleaf Pine Distribution

APPROXIMATE DISTRIBUTION OF THE LONG-LEAF TYPE OF FOREST

Range of the longleaf pine. Today only four percent of the longleaf pine forests that originally grew in the Coastal Plain of North America remain.





RPE





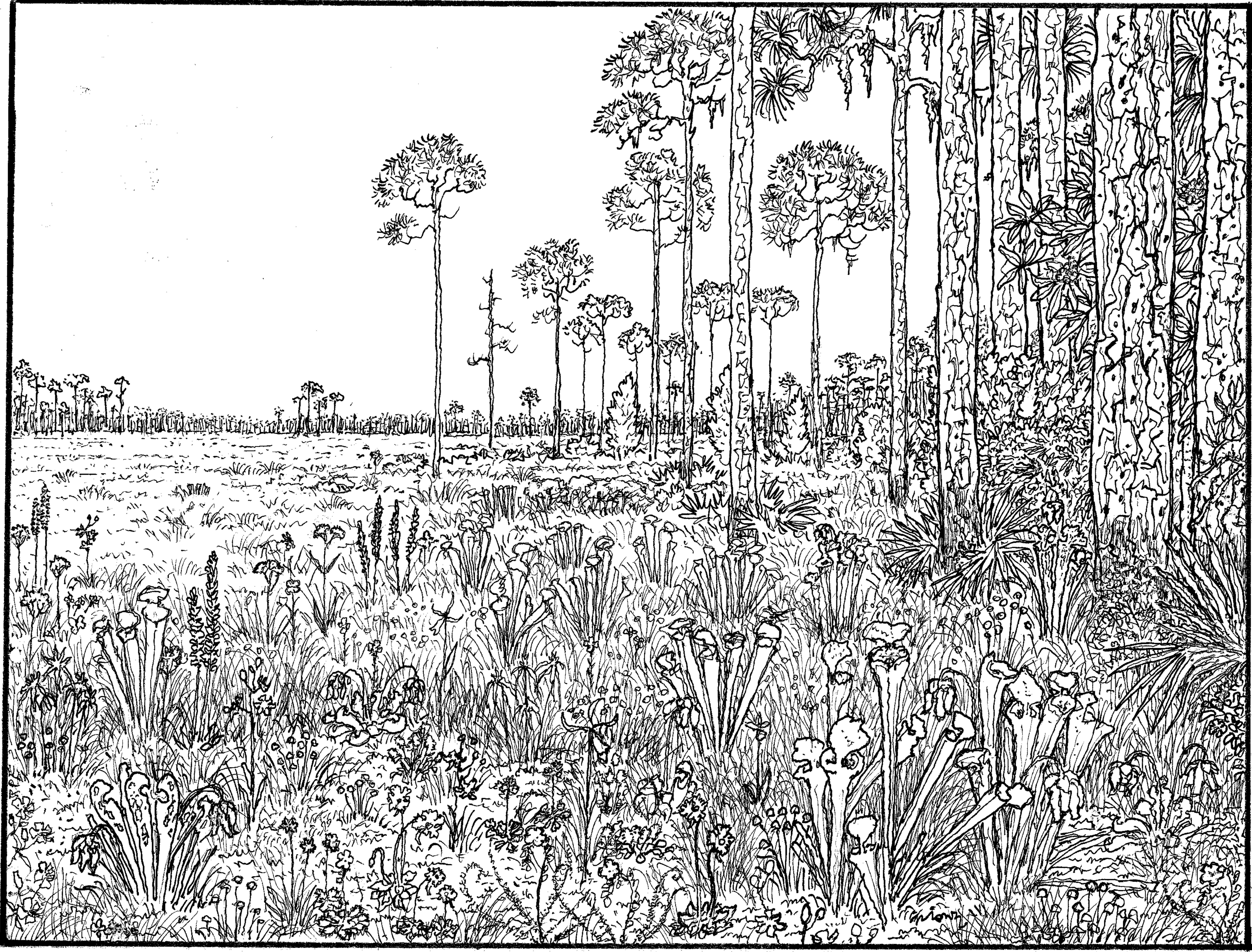
RPE

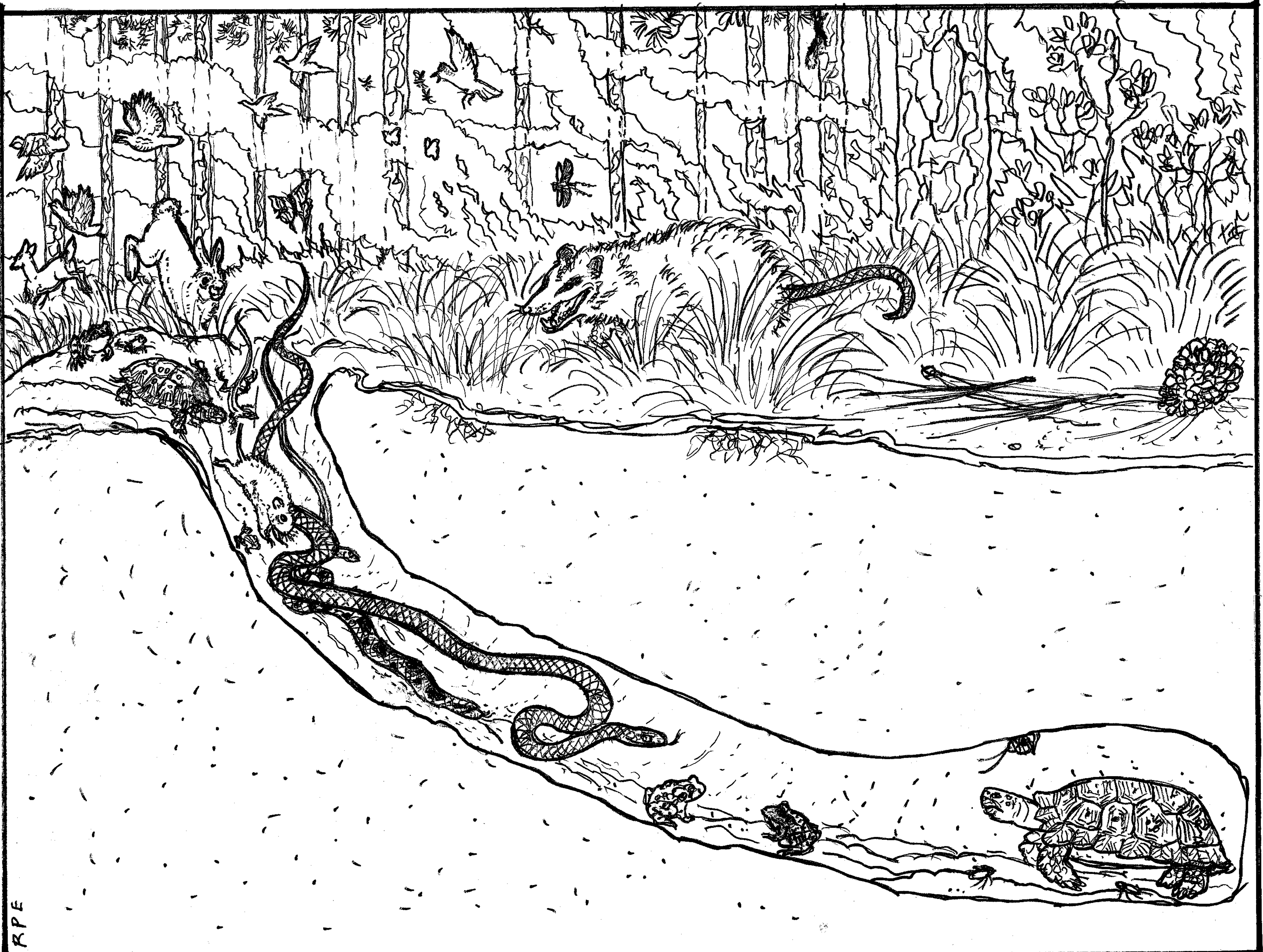


RPE









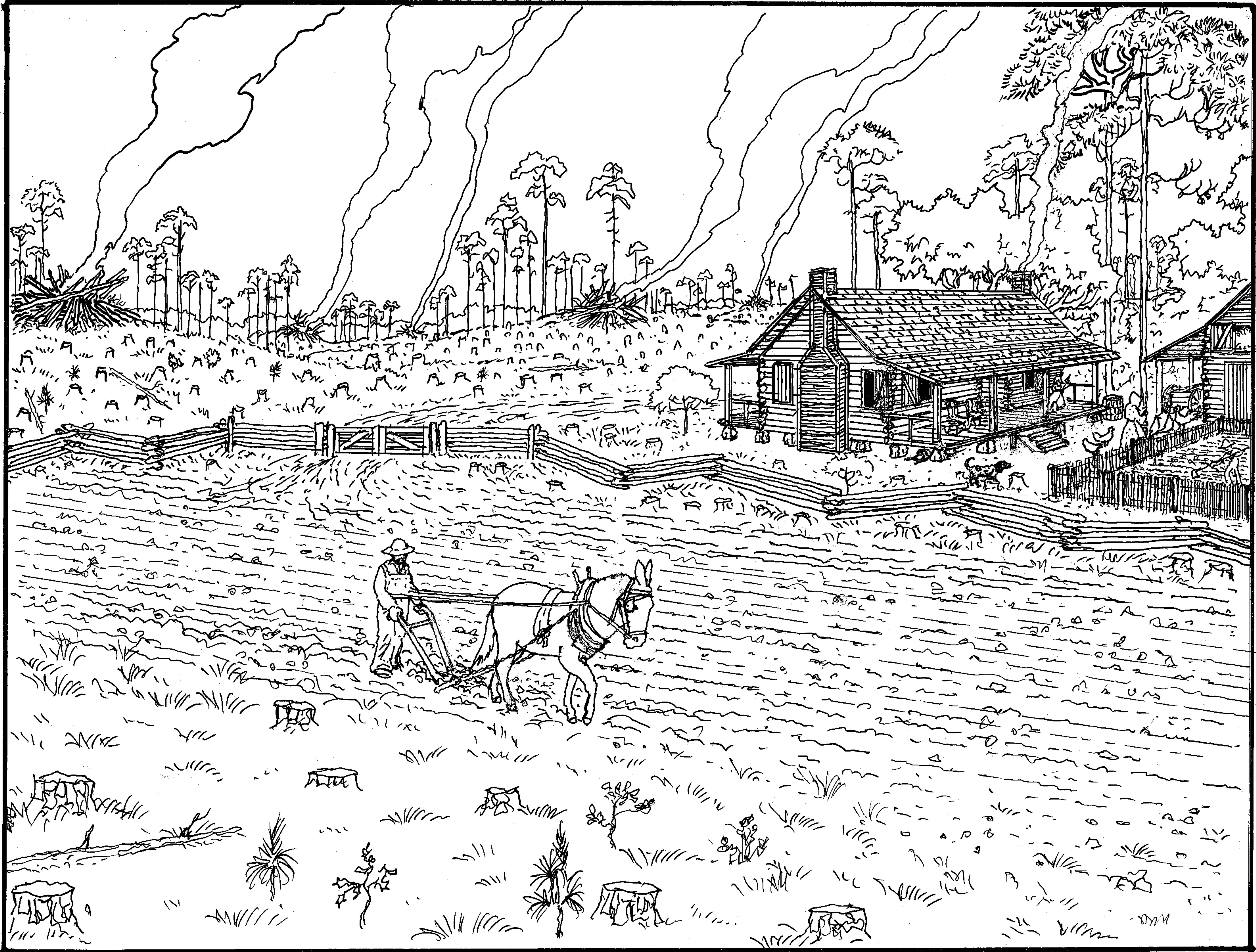
RPE

animal



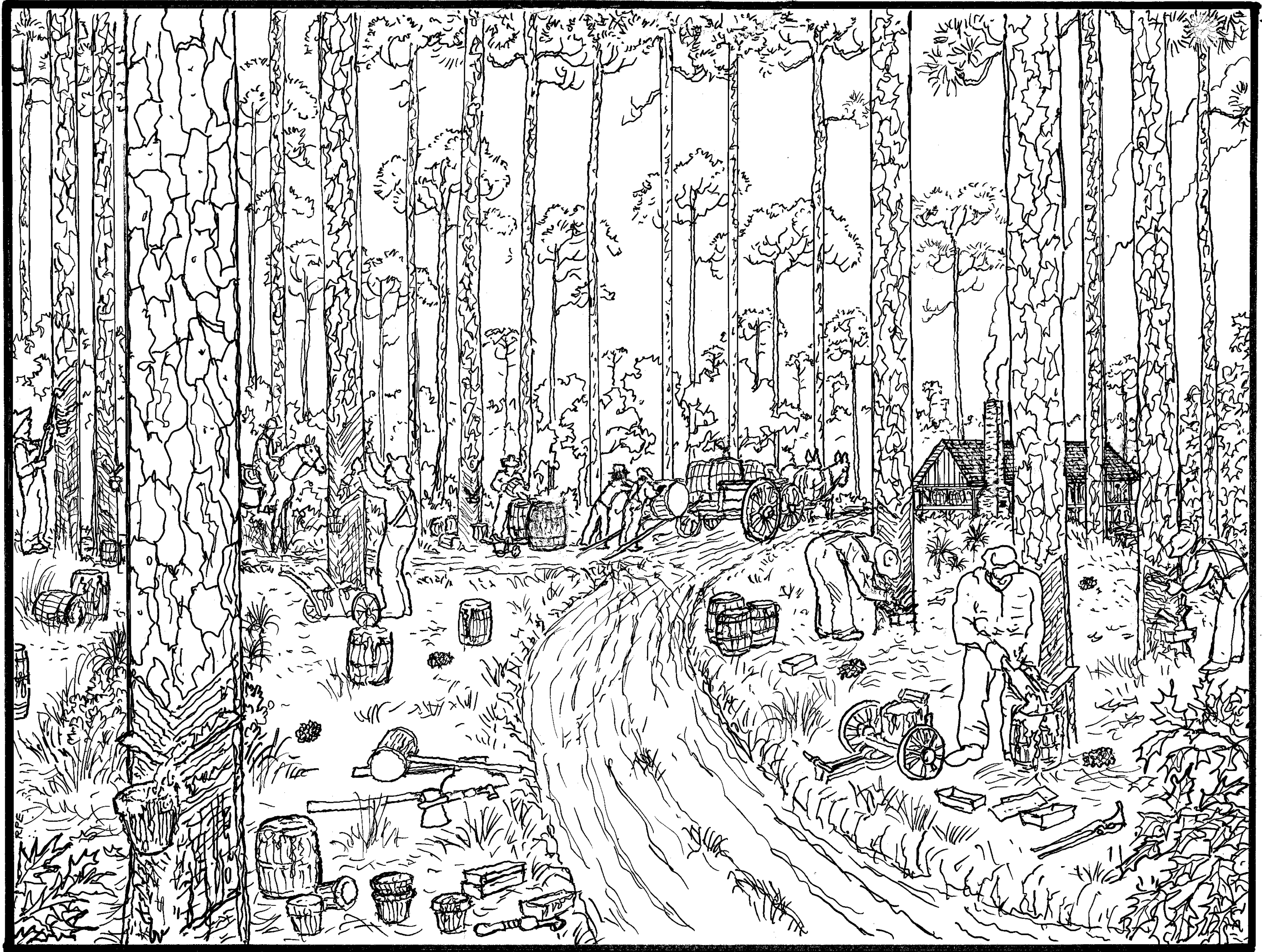






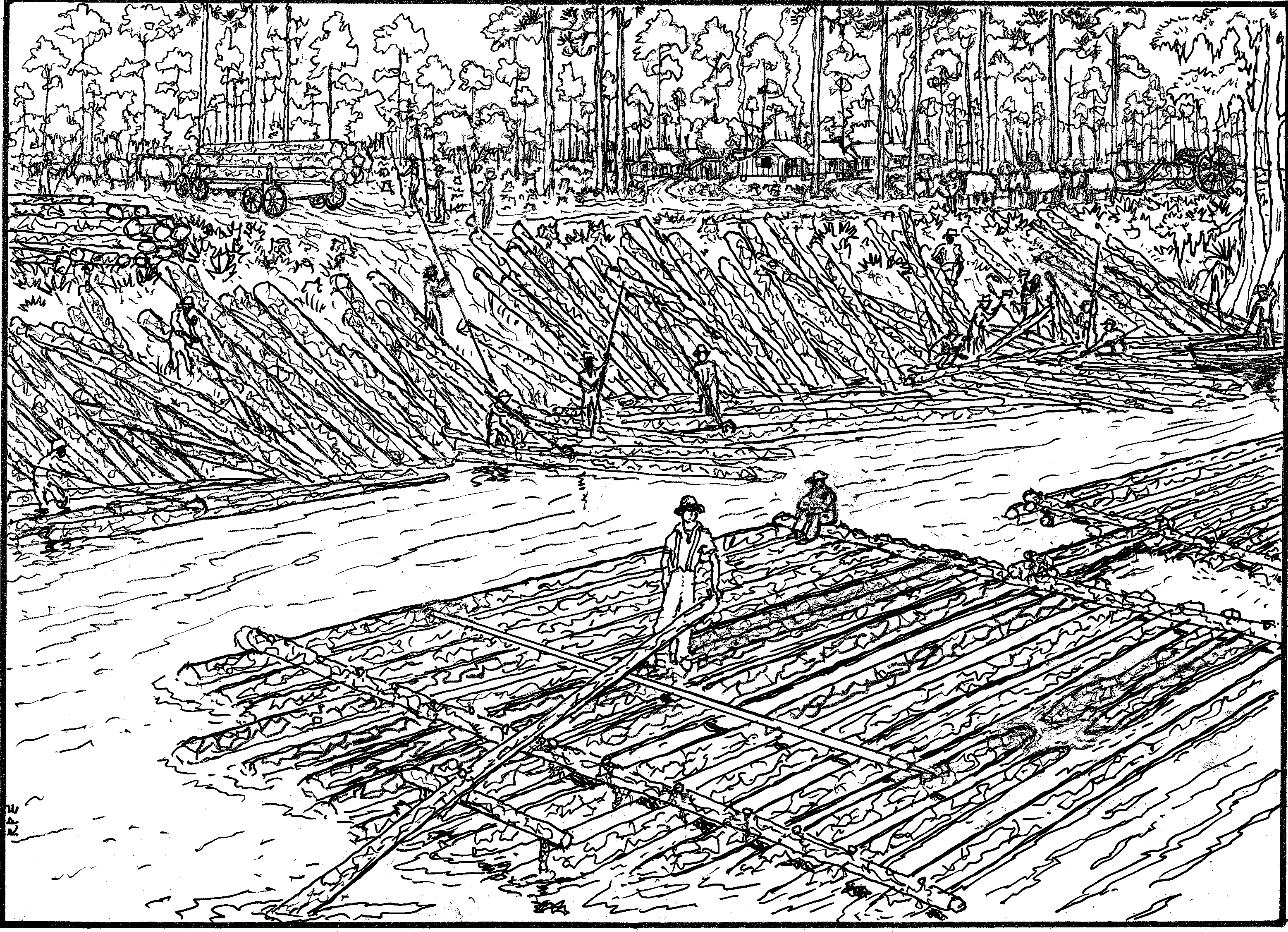


RFE

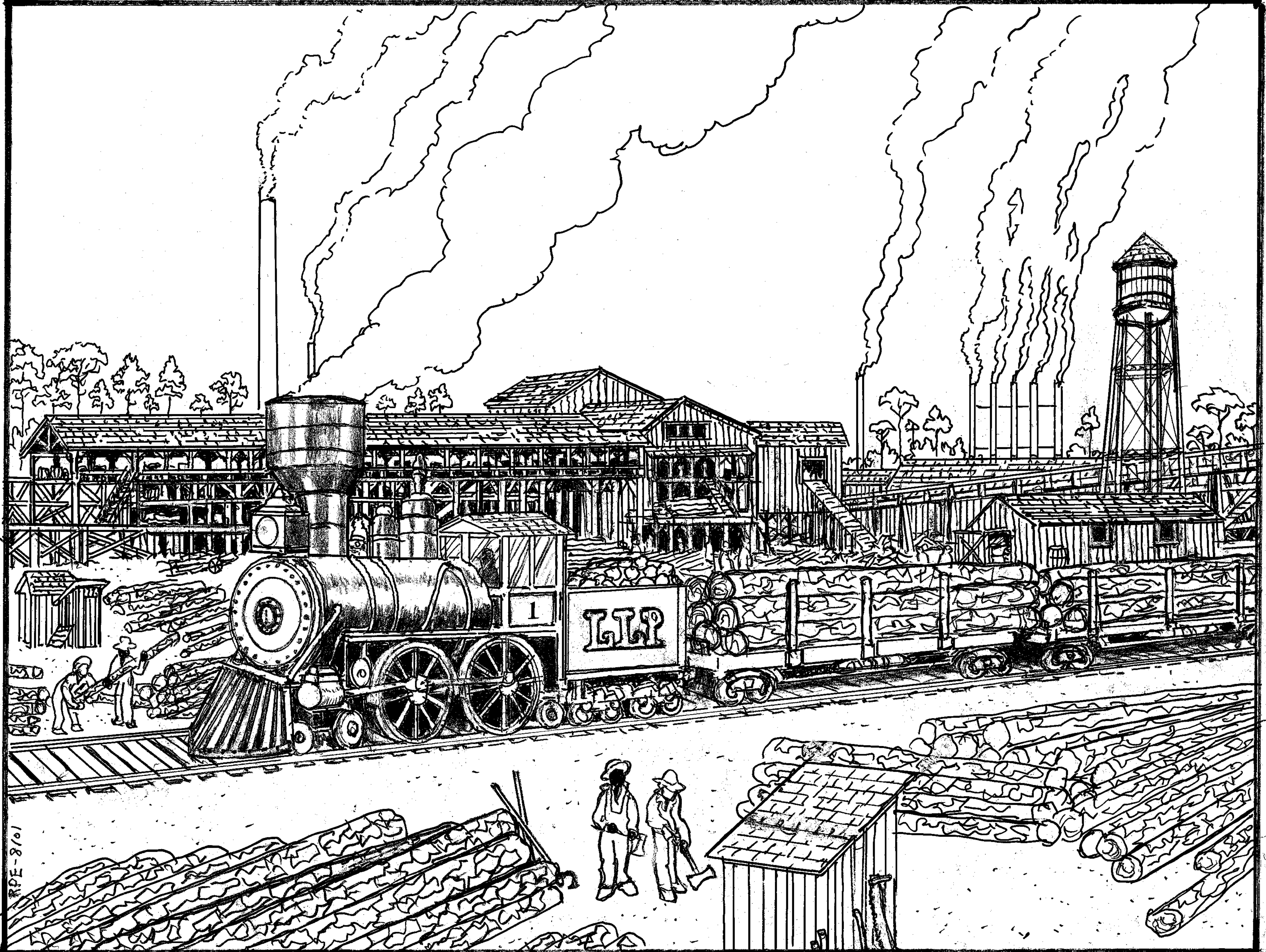




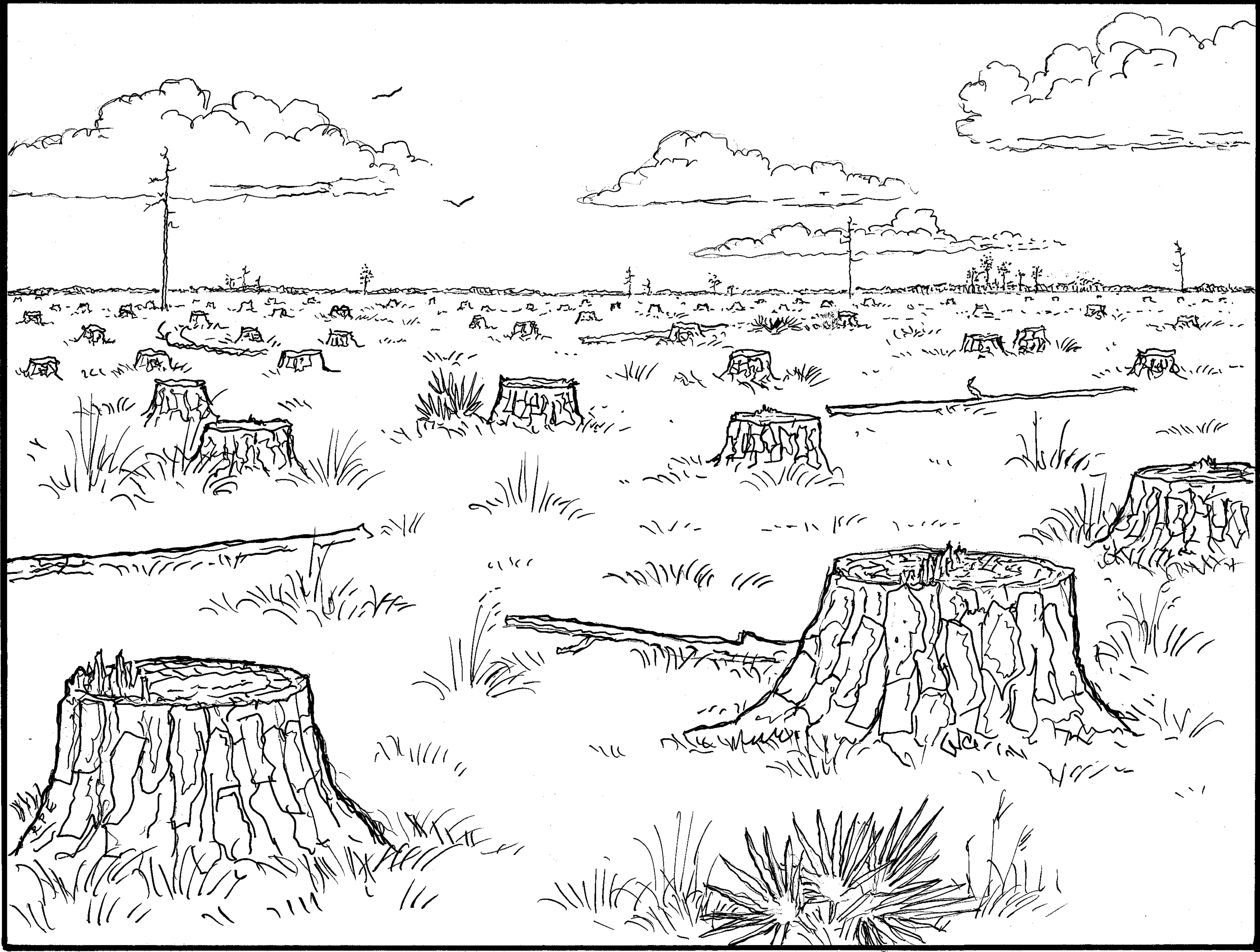
RPE

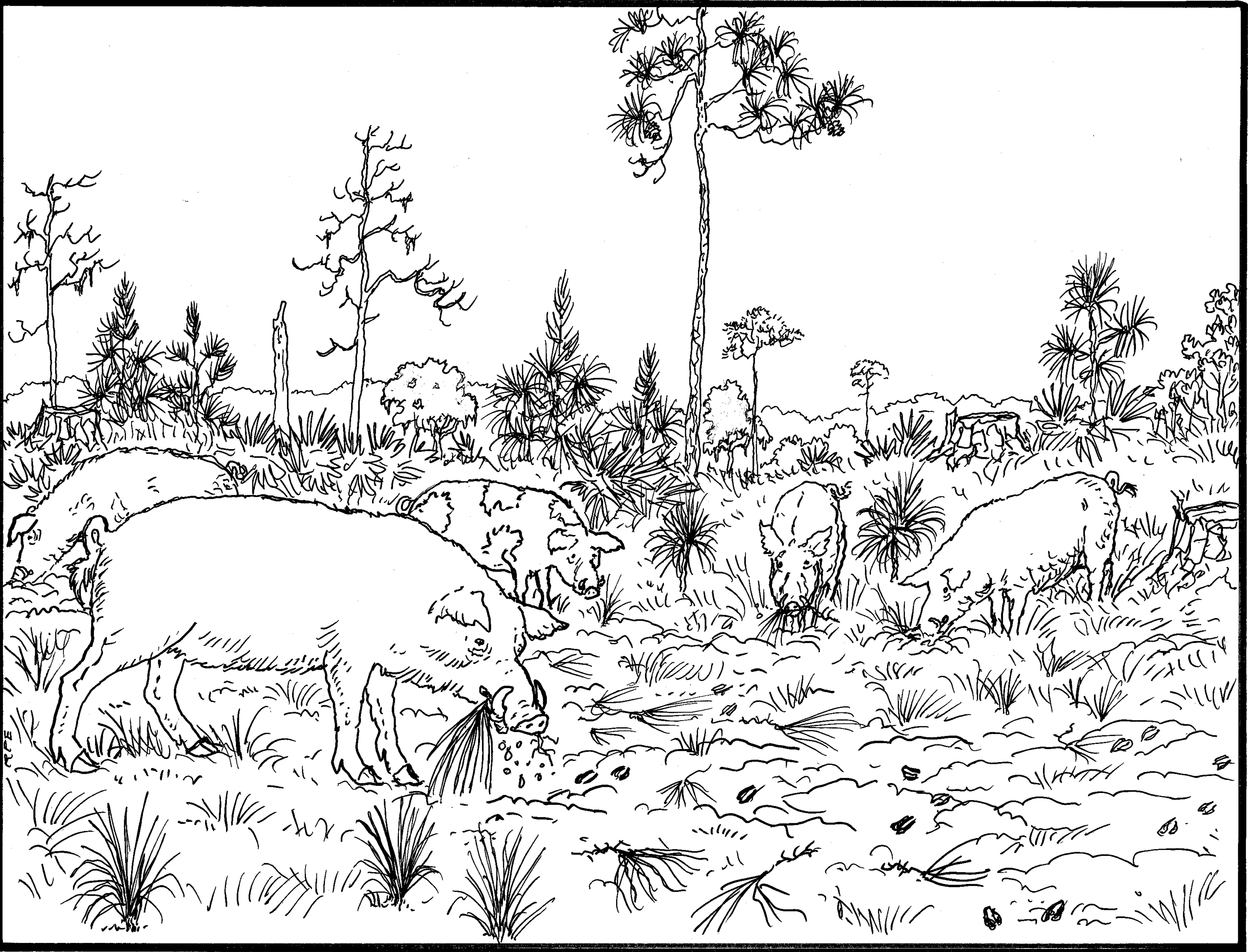


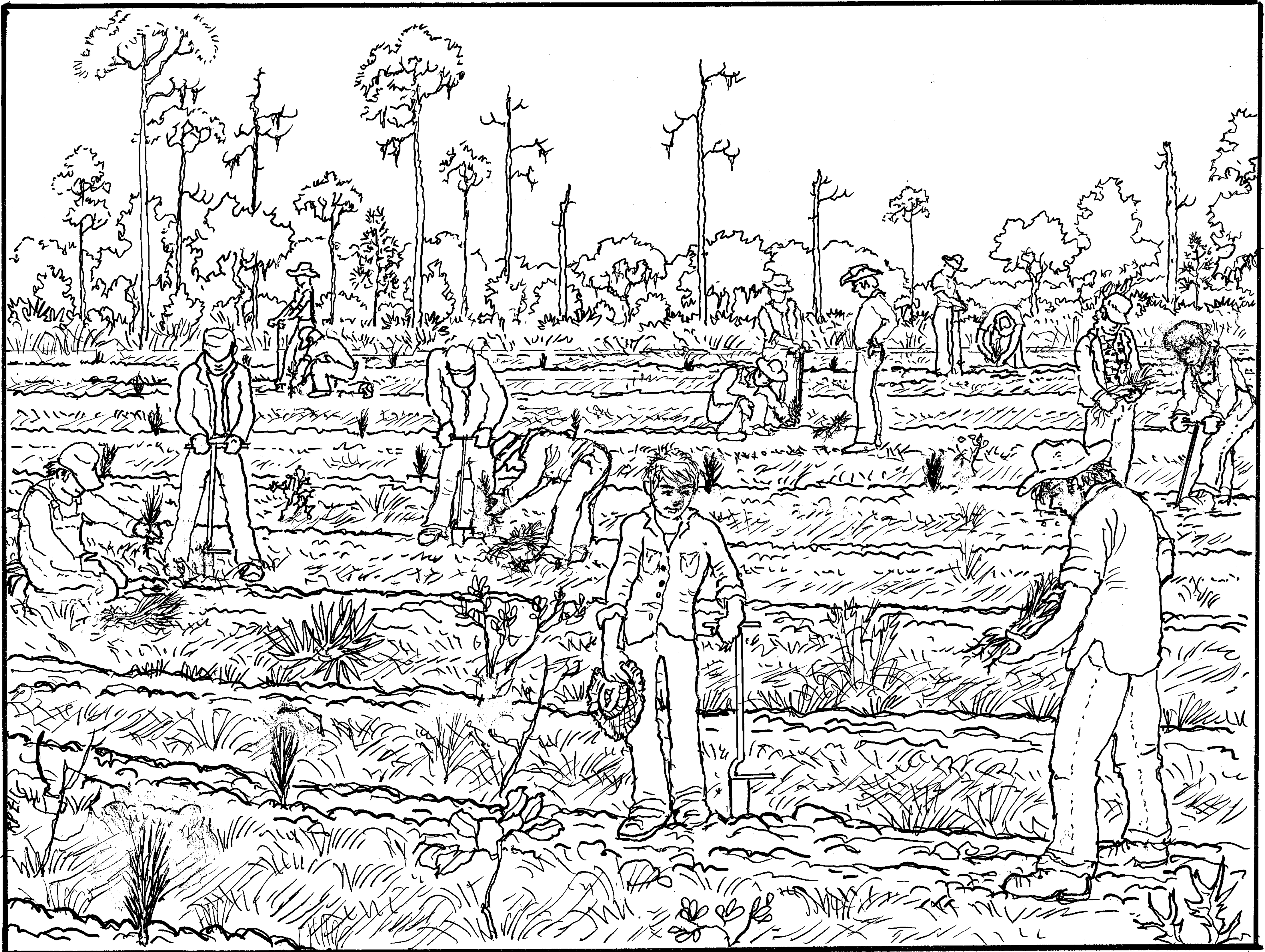
KPE

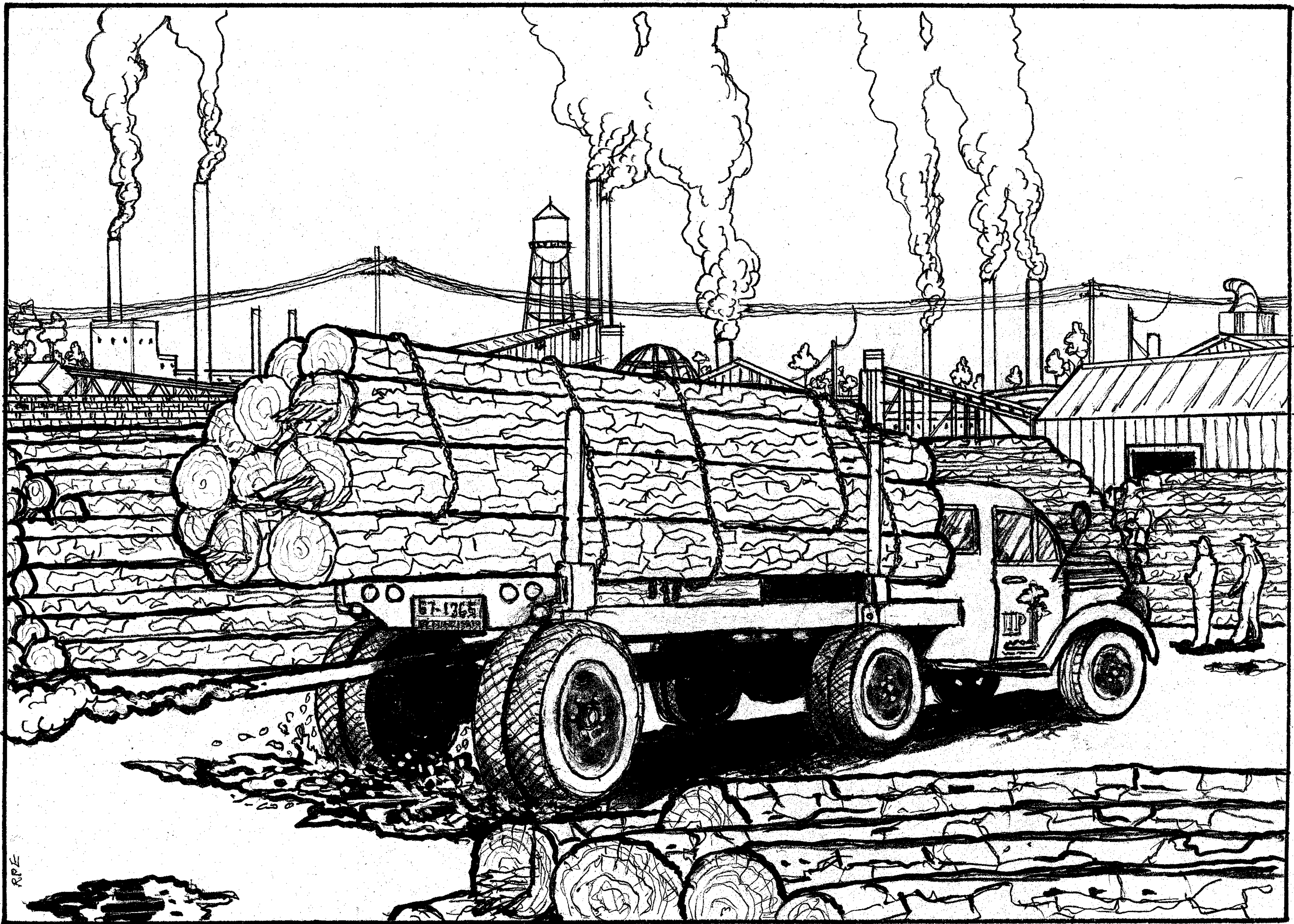


RPE-8101









RRE



WRE

